



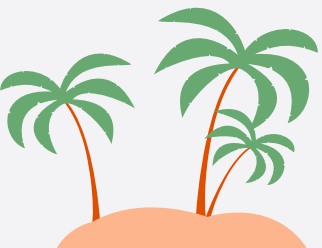
# guidepost summer camp 2024

---

Starting July 1 to August 24, 2024  
6 months to 12 years old

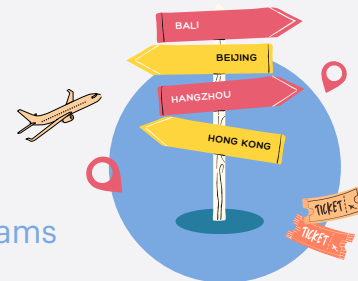
---

Make this summer  
unforgettable with unique  
learning experiences at  
Guidepost schools in Bali,  
Beijing, Guangzhou, Hangzhou,  
Shanghai and Hong Kong!





# guidepost summer camp 2024



Guidepost is excited to offer a comprehensive range of summer programs across our schools in programs across our schools in Asia.

## Bali

3-8

Guidepost Montessori AYANA Bali

3-8

## Hong Kong

9-22

Guidepost Family Club Causeway Bay

12-13

Guidepost Montessori Chai Wan

14

Guidepost Montessori Clearwater Bay

15

Guidepost Montessori Discovery Bay

16

Guidepost Montessori Happy Valley

17-18

Guidepost Montessori Kennedy Town

19-20

Guidepost Montessori Pok Fu Lam

21

Academy of Innovation Primary School (Guidepost)

22

## Beijing

23-26

Guidepost Montessori Hujialou

23-26

## Guangzhou

27-30

Guidepost Montessori Science City

27-30

## Hangzhou

31-34

Guidepost Montessori Wansongling

31-34

## Shanghai

35-42

## Other Important Information

43

Enrollment Details

43

Terms & Conditions

44

# Bali, Indonesia

Guidepost Montessori *AYANA* Bali





guidepost  
bali adventure 2024



# Guidepost Montessori AYANA Bali

A purpose-built school for an immersive  
Balinese and Montessori learning  
experience!

Welcome to our new home at Guidepost Montessori AYANA Bali!

Set to open in May, just in time for the summer, our new campus at AYANA Bali has been thoughtfully designed to reflect the traditional Balinese home aesthetic while the classrooms features Guidepost's high-fidelity Montessori programming.

Located within the AYANA Estate and adjacent to the AYANA Farm, our new campus will offer your child a unique learning environment, embracing both culture and nature, for an unparalleled educational experience.





# Bali Adventure Program Highlights

## Program Description

Enjoy the magic of Bali at our immersive and memorable adventure camps this summer.

Nestled amidst the lush landscape and surrounded by the pristine beaches of AYANA Estate, our camp in Bali offers a unique blend of adventure, culture and natural beauty.

Our child will embark on a journey of discovery, forging friendships and creating memories together with you that you can cherish beyond the summer months.

Our experienced guides ensures a safe and inclusive environment where children can learn about the world around them.

Join us for an enriching and transformative experience that will ignite a love for nature, foster personal growth, and create a deep connection with the captivating spirit of Bali.



## Program Highlights

- ✓ **Montessori at Heart**
  - . period for self-initiated work
  - . beautiful prepared environment
- ✓ **Dual Language Program**
  - . English and Mandarin materials
  - . daily language activities
- ✓ **Weekly Themes**
  - . sparks curiosity and exploration
  - . rich learning content
- ✓ **Creative Creations**
  - . hands-on craft projects
  - . we put fun first!



**guidepost**  
**bali adventure 2024**



# Weekly Themes

---

## cultural connections

**Weeks 1 & 5**

**July 2 - July 6 | July 30 - August 3**



An enriching experience for young adventurers seeking to explore the island's vibrant culture and deep-rooted traditions.

Throughout the week, children will engage in a variety of activities that foster an understanding and appreciation of Balinese heritage. From traditional dance and music workshops to arts and crafts inspired by local craftsmanship, children will have the opportunity to immerse themselves in the rich artistic expressions of Bali.

---

## nurtured by nature

**Weeks 2 & 6**

**July 9 - July 13 | August 6 - August 10**



A week-long camp designed to connect young children with nature through immersive time spent outdoors. Children explore nature crafting while developing an understanding how to they can actively contribute to the preservation of nature through active, conscious care.

Join us for an unforgettable week where campers will be nurtured by the beauty of Bali's nature, develop a sense of wonder and awe, and create lasting memories while forging a lifelong connection with the environment.



**guidepost**  
**bali adventure 2024**



## Weekly Themes

---

### from farm to table

**Weeks 3 & 7**

**July 16 - July 20 | August 13 - August 17**



A week-long camp in Bali that offers a unique and immersive experience centered around sustainable agriculture, culinary exploration, and farm-to-table practices.

Children will learn about farming and simple Javanese food preparation techniques while exploring the AYANA Farm – an emerald-green patchwork of generous fruit trees, vegetable plots and edible flowers.

---

### the big blue ocean

**Weeks 4 & 8**

**July 23 - July 27 | August 20 - August 24**



This adventure session immerses campers in the wonders of the ocean and promotes marine conservation. This exciting and educational experience is designed to foster a deep connection with the marine environment and instill a sense of responsibility towards its preservation.

With over 1 million species of plants and animals discovered in the oceans, children will spend time exploring the abundance of life that lives near and under the water.



guidepost  
bali adventure 2024



# Guidepost Montessori AYANA Bali



Guidepost AYANA Bali  
AYANA Estate  
Jalan Karang Mas Sejahtera, Jimbaran, Bali, Indonesia

## Class schedule & fees

Programs	Frequency	Schedule	Fees *
<b>Bali Adventure</b> age 3 to 6 years unaccompanied	Tuesday to Friday + Saturday (optional memorable moments)	8:30am – 1:00pm (lunch included) + Optional Memorable Moment on Saturday	USD480 (payment in IDR7.5 million)
		8:30am – 3:30pm (lunch included) + Optional Memorable Moment on Saturday	USD570 (payment in IDR8.9 million)

- Flight & accommodation not included

## Bali Adventure Packages

Families enrolling in Guidepost Bali Adventure and staying at AYANA Bali will get an exclusive offer including. AYANA Booking code will be provided upon confirmation of enrollment.

- Accommodation up to 30% off room with breakfast rates (25%+ at RIMBA, AYANA Resort, and AYANA Segara; 15% for 2 Bedroom Suites; 10% for AYANA Suites and Villas)
- Resort Credit US\$100 resort credit per stay based on room selection
- Laundry 2 pieces per day free
- Aquatonic Spa free 60 minute session for two people



# Hong Kong, China

Guidepost Causeway Bay

Guidepost Chai Wan

Guidepost Clearwater Bay

Guidepost Discovery Bay

Guidepost Happy Valley

Guidepost Kennedy Town

Guidepost Pok Fu Lam

Academy of Innovation

Primary School





# Around The World Program Highlights

## Program Description

Embark on an incredible global adventure this summer. Join us for five unforgettable weeks, each dedicated to exploring the vibrant cultures and fascinating wonders of five captivating continents: Asia, South America, Oceania, Africa, and Europe. At our "Around the World" Summer Camp, we believe in providing an enriching and immersive experience that nurtures your child's curiosity, creativity, and global awareness.

We have meticulously designed a program that combines education and fun in the most captivating way. Every week, your child will be transported to a different continent, delving deep into its history, geography, traditions, and natural marvels. By attending each week of our "Around the World" Camp, your child will benefit from a holistic and immersive learning experience. They will develop global awareness, cultural sensitivity, and an appreciation for diversity. Most importantly, your child will have an incredible amount of fun, creating lasting memories as they explore the world from the comfort of our camp.

Join us this summer for an extraordinary adventure that will broaden your child's horizons and ignite their passion for exploration. Don't miss out on this incredible opportunity to experience the world in a whole new way!



## Program Highlights



### Montessori at Heart

- . beautiful prepared environments
- . period for self-initiated work



### Dual Language Program

- . English and Mandarin materials
- . daily language activities



### Weekly Themes

- . sparks curiosity and exploration
- . rich learning content



### Creative Creations

- . hands-on craft projects
- . we put fun first!



## Weekly Themes:

### asia week



During the Asia week, your child will be captivated by the mystical wonders of the Far East. Through immersive activities, they will gain a deeper understanding of Asian countries and their respective traditions.

By the end of Asia Week, your child will have gained a deep appreciation for the rich tapestry of Asian cultures, as well as an understanding of the importance of harmony, balance, and embracing differences.

### south america week



In South America Week, your child will be captivated by the vibrant rhythms and rich heritage of this captivating continent.

Through music, dance, and art, they will immerse themselves in the lively cultures of the countries in South America.

Campers will learn to dance, create colorful crafts inspired by indigenous traditions, and explore the fascinating ecosystems of the Amazon rainforest. By appreciating the diversity of South America, your child will develop an understanding of the importance of inclusivity, celebration, and embracing differences.

### oceania week



Oceania Week will transport your child to the enchanting lands of the Pacific Islands. They will discover the wonders of Australia, New Zealand, and the Polynesian islands.

Through storytelling, traditional art, and music, campers will learn about Aboriginal cultures, create their own didgeridoos, and master the art of hula dancing.

By the end of the week, they will learn about the importance of community your child will have a deep appreciation for island life!

### africa week



During Africa Week, your child will embark on a journey through the cradle of civilization. They will encounter the majestic wildlife of the African savannah and experience the vibrant rhythms of African music.

Through storytelling, art, and cultural activities, your child will gain a deeper understanding of the rich traditions and diverse cultures of Africa.

By the end of the week, your child will have a deep appreciation for the beauty of nature, the importance of conservation, and the interconnectedness of all living things.

### europa week

In Europe Week, your child will explore the wonders of a continent steeped in history and cultural diversity. From ancient ruins to magnificent castles, we will delve into the fascinating stories of European civilizations.

Your child will learn about influential artists and composers, participate in cultural celebrations, and taste the culinary delights of various European countries.

Through these experiences, your child will gain an appreciation for the importance of heritage, creativity, and the power of artistic expression.





**guidepost**  
around the world 2024



# Guidepost Family Club Causeway Bay



Leighton Centre, G02-G03, G15 & L02, 77 Leighton Rd  
Causeway Bay, Hong Kong

## Class schedule & fees

5 weeks | July 2 - August 3, 2024

Week 1: July 2 to 5 | Week 2: July 8 to 12 | Week 3: July 15 to 19

Week 4: July 22 to 26 | Week 5: July 29 to August 3

Programs	Frequency	Schedule	Fees
<b>around the world</b> age 6 to 12 months accompanied	Tuesday & Thursday	11:00am to 12:00pm	HKD 750 / week
	5-week Enrollment on Saturdays	11:00am to 12:00pm	HKD 1,875 / program
<b>around the world</b> age 12 to 24 months accompanied	Tuesday & Thursday	9:00am to 10:30am	HKD 950 / week
		3:00pm to 4:30pm	
	Monday, Wednesday & Friday	9:00am to 10:30am	HKD 1,425 / week  *Week 1 will be pro-rated to HKD950/ week
		11:00am to 12:30pm	
		3:00pm to 4:30pm	
	5-week Enrollment on Saturdays	9:00am to 10:30am	HKD 2,375 / program
3:00pm to 4:30pm			



**guidepost**  
around the world 2024



# Guidepost Family Club Causeway Bay



Leighton Centre, G02-G03, G15 & L02, 77 Leighton Rd  
Causeway Bay, Hong Kong

## Class schedule & fees

5 weeks | July 2 - August 3, 2024

Week 1: July 2 to 5 | Week 2: July 8 to 12 | Week 3: July 15 to 19

Week 4: July 22 to 26 | Week 5: July 29 to August 3

Programs	Frequency	Schedule	Fees
<b>around the world</b> age 2 to 4 years age 4 to 6 years unaccompanied	Monday to Friday	9:00am to 12:00pm	HKD3,000 / week  *Week 1 will be pro-rated to HKD2,400 / week
		1:00pm to 4:00pm	
<b>transitional toddler</b> age 1.5 to 2.5 years semi-accompanied	Monthly Enrollment in July: Monday to Friday	9:00am to 11:00am	HKD9,900 / month
		2:30pm to 4:30pm	
	Monthly Enrollment in July: Wednesday to Friday	9:00am to 11:00am  2:30pm to 4:30pm	HKD6,900 / month
Monthly Enrollment in July: Monday & Tuesday	9:00am to 11:00am  2:30pm to 4:30pm	HKD4,800 / month	

- No discount is available for transitional toddler program.



# Guidepost Montessori Chai Wan



Harmony Garden, 9 Siu Sai Wan Road,  
Siu Sai Wan, Chai Wan

## Class schedule & fees

4 weeks | July 2 - July 26, 2024

Week 1: July 2 to 5 | Week 2: July 8 to 12

Week 3: July 15 to 19 | Week 4: July 22 to 26

Programs	Frequency	Schedule	Fees
<b>around the world</b> age 6 to 12 months accompanied	Tuesday & Thursday	3:00pm to 4:00pm	HKD 750 / week
<b>around the world</b> age 12 to 24 months accompanied	Tuesday & Thursday	8:30am to 10:00am	HKD 950 / week
		10:30am to 12:00pm	
<b>around the world</b> age 2 to 4 years age 4 to 6 years unaccompanied	Monday, Wednesday & Friday	11:00am to 12:30pm	HKD 1,425 / week *Week 1 will be pro-rated to HKD950 / week
		9:00am to 12:00pm	
<b>transitional toddler</b> age 1.5 to 2.5 years semi-accompanied	Monday, Wednesday & Friday	1:00pm to 4:00pm	HKD3,000 / week *Week 1 will be pro-rated to HKD2,400 / week
		8:30am to 10:30am	
<b>transitional toddler</b> age 1.5 to 2.5 years semi-accompanied	Monday, Wednesday & Friday	2:30pm to 4:30pm	HKD5,400 / month
		8:30am to 10:30am	

• No discount is available for transitional toddler program.



**guidepost**  
around the world 2024



# Guidepost Montessori Clearwater Bay



Level 7, Silverstrand Mart, 2 Silver Cape Road  
Clearwater Bay, Sai Kung

## Class schedule & fees

4 weeks | July 2 - July 26, 2024

Week 1: July 2 to 5 | Week 2: July 8 to 12

Week 3: July 15 to 19 | Week 4: July 22 to 26

Programs	Frequency	Schedule	Fees
<b>around the world</b> age 6 to 12 months accompanied	Tuesday & Thursday	11:00am to 12:00pm	HKD 750 / week
<b>around the world</b> age 12 to 24 months accompanied	Tuesday & Thursday	9:00am to 10:30am	HKD 950 / week
		3:00pm to 4:30pm	
	Monday, Wednesday & Friday	9:00am to 10:30am	HKD 1,425 / week
		11:00am to 12:30pm	*Week 1 will be pro-rated to HKD950 / week
		3:00pm to 4:30pm	
<b>around the world</b> age 2 to 4 years age 4 to 6 years unaccompanied	Monday to Friday	9:00am to 12:00pm	HKD3,000 / week
		1:00pm to 4:00pm	*Week 1 will be pro-rated to HKD2,400 / week



**guidepost**  
around the world 2024



# Guidepost Montessori Discovery Bay



1-06, 1/F, 92 Siena Avenue, Discovery Bay North,  
Discovery Bay

## Class schedule & fees

4 weeks | July 2 - July 26, 2024

Week 1: July 2 to 5 | Week 2: July 8 to 12

Week 3: July 15 to 19 | Week 4: July 22 to 26

Programs	Frequency	Schedule	Fees
<p><b>around the world</b></p> <p>age 2 to 4 years age 4 to 6 years unaccompanied</p>	<p>Monday to Friday</p>	<p>9:00am to 12:00pm</p> <p>1:00pm to 4:00pm</p>	<p>HKD3,000 / week</p> <p>*Week 1 will be pro-rated to HKD2,400 / week</p>





**guidepost**  
around the world 2024



# Guidepost Montessori Happy Valley Hawthorn Road



2 Hawthorn Road, Happy Valley

## Class schedule & fees

4 weeks | July 2 - July 26, 2024

Week 1: July 2 to 5 | Week 2: July 8 to 12

Week 3: July 15 to 19 | Week 4: July 22 to 26

Programs	Frequency	Schedule	Fees
<p><b>around the world</b></p> <p>age 2 to 4 years age 4 to 6 years unaccompanied</p>	<p>Monday to Friday</p>	<p>9:00am to 12:00pm</p> <p>1:00pm to 4:00pm</p>	<p>HKD3,000 / week</p> <p>*Week 1 will be pro-rated to HKD2,400 / week</p>

- NOTE: School bus service will be available, please contact us for details.



**guidepost**  
around the world 2024



# Guidepost Montessori Happy Valley Sing Woo Road



1/F, Happy Court, 39E Sing Woo Rd, Happy Valley

## Class schedule & fees

4 weeks | July 2 - July 26, 2024

Week 1: July 2 to 5 | Week 2: July 8 to 12

Week 3: July 15 to 19 | Week 4: July 22 to 26

Programs	Frequency	Schedule	Fees
<b>around the world</b> age 6 to 12 months accompanied	Tuesday & Thursday	11:00am to 12:00pm	HKD 750 / week
<b>around the world</b> age 12 to 24 months accompanied	Tuesday & Thursday	9:00am to 10:30am	HKD 950 / week
		3:00pm to 4:30pm	
	Monday, Wednesday & Friday	9:00am to 10:30am 11:00am to 12:30pm 3:00pm to 4:30pm	HKD 1,425 / week  *Week 1 will be pro-rated to HKD950 / week



**guidepost**  
around the world 2024



# Guidepost Montessori Kennedy Town



1-2 Floor, 554-560 Queen's Road West  
Sai Wan, Shek Tong Tsui

## Class schedule & fees

4 weeks | July 2 - July 26, 2024

Week 1: July 2 to 5 | Week 2: July 8 to 12

Week 3: July 15 to 19 | Week 4: July 22 to 26

Programs	Frequency	Schedule	Fees
<b>around the world</b> age 6 to 12 months accompanied	Tuesday & Thursday	11:00am to 12:00pm	HKD 750 / week
<b>around the world</b> age 12 to 24 months accompanied	Tuesday & Thursday	9:00am to 10:30am	HKD 950 / week
		3:00pm to 4:30pm	
	Monday, Wednesday & Friday	9:00am to 10:30am	HKD 1,425 / week
		11:00am to 12:30pm	*Week 1 will be pro-rated to HKD950 / week
		3:00pm to 4:30pm	
<b>around the world</b> age 2 to 4 years age 4 to 6 years unaccompanied	Monday to Friday	9:00am to 12:00pm	HKD3,000 / week
		1:00pm to 4:00pm	*Week 1 will be pro-rated to HKD2,400 / week

• NOTE: School bus service will be available, please contact us for details.



**guidepost**  
around the world 2024



# Guidepost Montessori Kennedy Town



1-2 Floor, 554-560 Queen's Road West  
Sai Wan, Shek Tong Tsui

## Class schedule & fees

Programs	Frequency	Schedule	Fees
<b>transitional toddler</b> age 1.5 to 2.5 years semi-accompanied	Monthly Enrollment in July: Monday to Friday	9:00am to 11:00am 2:30pm to 4:30pm	HKD9,900 / month
	Monthly Enrollment in July: Monday, Wednesday & Friday	9:00am to 11:00am 2:30pm to 4:30pm	HKD6,900 / month
	Monthly Enrollment in July: Tuesday & Thursday	9:00am to 11:00am 2:30pm to 4:30pm	HKD4,800 / month

- No discount is available for transitional toddler program.



**guidepost**  
around the world 2024



# Guidepost Montessori Pok Fu Lam



L101 Chi Fu Landmark, Chi Fu Fa Yuen, Pok Fu Lam

## Class schedule & fees

4 weeks | July 2 - July 26, 2024

Week 1: July 2 to 5 | Week 2: July 8 to 12

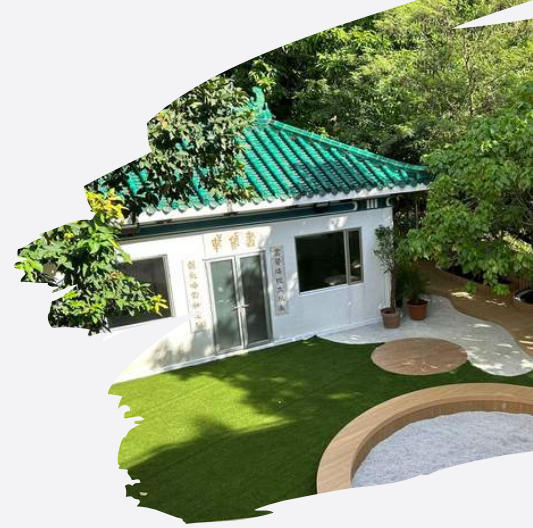
Week 3: July 15 to 19 | Week 4: July 22 to 26

Programs	Frequency	Schedule	Fees
<b>around the world</b> age 6 to 12 months accompanied	Tuesday & Thursday	11:00am to 12:00pm	HKD 750 / week
<b>around the world</b> age 12 to 24 months accompanied	Tuesday & Thursday	9:00am to 10:30am	HKD 950 / week
		3:00pm to 4:30pm	
	Monday, Wednesday & Friday	9:00am to 10:30am	HKD 1,425 / week
		11:00am to 12:30pm	*Week 1 will be pro-rated to HKD950 / week
		3:00pm to 4:30pm	
<b>around the world</b> age 2 to 4 years age 4 to 6 years unaccompanied	Monday to Friday	9:00am to 12:00pm	HKD3,000 / week
		1:00pm to 4:00pm	*Week 1 will be pro-rated to HKD2,400 / week

• NOTE: School bus service will be available, please contact us for details.



**guidepost**  
around the world 2024



# Academy of Innovation Primary School



77 Caroline Hill Road, Causeway Bay

## Class schedule & fees

5 weeks | July 2 - August 2, 2024

Week 1: July 2 to 5 | Week 2: July 8 to 12 | Week 3: July 15 to 19

Week 4: July 22 to 26 | Week 5: July 29 to August 2

Programs	Frequency	Schedule	Fees
<p><b>around the world</b></p> <p>age 6-9 years age 9-12 years unaccompanied</p>	<p>Monday to Friday</p>	<p>9:00am to 12:00pm</p> <p>1:00pm to 4:00pm</p>	<p>HKD3,500 / week</p> <p>*Week 1 will be pro-rated to HKD2,800 / week</p>

# Beijing, China

Guidepost Montessori Hujialou





guidepost  
immersive mandarin 2024



## Guidepost Montessori Hujialou

Experience old Beijing in a 170-year-old traditional courtyard.

Guidepost Hujialou in Beijing, China features high-fidelity Montessori programming and offers a unique learning experience to children ages eighteen months to six years.

Situated in a 170-year-old traditional courtyard conveniently located in the Chaoyang business district. Guidepost Hujialou offers half-day and full-day holiday programming.







# Immersive Mandarin Program Highlights

## Program Description

Young children will be immersed in a native Mandarin environment led by trained and qualified Montessori guides at Guidepost Montessori Hujialou. Children will have the unique opportunity to learn in an inspiring setting and explore the natural beauty that surrounds them.

Mornings are spent engaging with peers during the Montessori work period, laying the foundation for a lifelong love of learning. This is followed by daily afternoon activities that encourage an appreciation for the rich history and culture that our diverse world has to offer.



## Program Highlights

- ✓ **Montessori at Heart**
  - . high-fidelity programming
  - . beautiful prepared environment
- ✓ **Mandarin Immersion**
  - . daily language activities
- ✓ **Unique Learning Environment**
  - . activities designed to explore the rich history and culture of Beijing
- ✓ **Weekly Creative Creations**
  - . fun hands on activities and creations



guidepost  
immersive mandarin 2024



# Guidepost Montessori Hujialou



2 South Hu Jia Lou  
Chaoyang District, Beijing, China

## Class schedule & fees

8 weeks | July 1 - August 23, 2024

Week 1: July 1 to 5 | Week 2: July 8 to 12 | Week 3: July 15 to 19

Week 4: July 22 to 27 | Week 5: July 29 to August 2 | Week 6: August 5 to 9

Week 7: August 12 to 16 | Week 8: August 19 to 23

Programs	Frequency	Schedule	Fees *
<b>Immersive Mandarin</b> age 1.5 to 3 years unaccompanied	Monday to Friday	8:30am to 12:00pm	RMB2,625 / week (HKD3,000 / week)
	Monday to Friday	8:30am to 4:00pm	RMB3,500 / week (HKD4,000 / week)
<b>Immersive Mandarin</b> age 3 to 6 years unaccompanied	Monday to Friday	8:30am to 12:00pm	RMB2,625 / week (HKD3,000 / week)
	Monday to Friday	8:30am to 4:00pm	RMB3,500 / week (HKD4,000 / week)

• NOTE: Flight & accommodation not included

# Guangzhou, China

Guidepost Montessori  
Science City





guidepost  
immersive mandarin 2024



# Guidepost Montessori Science City

Our 7000m<sup>2</sup> flagship school in the heart of Science City.

Guidepost Montessori Science City in Guangzhou, China, showcases high-fidelity Montessori programming and delivers a distinct learning experience for children aged eighteen months to six years.

Situated in the vibrant city of Guangzhou, surrounded by a unique blend of nature and modern urban charm, our campus, Guidepost Montessori Science City, offers an engaging mix of culture and contemporary lifestyle. Guidepost Montessori Science City provides both half-day and full-day holiday programming that is designed to engage and inspire.





# Immersive Mandarin Program Highlights

## Program Description

Young children will be immersed in a native Mandarin environment led by trained and qualified Montessori guides at. Children will have the unique opportunity to learn in an inspiring setting and explore the natural beauty that surrounds them.

Mornings are spent engaging with peers during the Montessori work period, laying the foundation for a lifelong love of learning. This is followed by daily afternoon activities that encourage an appreciation for the rich history and culture that our diverse world has to offer.



## Program Highlights

- ✓ **Montessori at Heart**
  - . high-fidelity programming
  - . beautiful prepared environment
- ✓ **Mandarin Immersion**
  - . daily language activities
- ✓ **Unique Learning Environment**
  - . activities designed to explore the rich history and culture of Gaungzhou
- ✓ **Weekly Creative Creations**
  - . fun hands on activities and creations



**guidepost**  
immersive mandarin 2024



# Guidepost Montessori Science City



Floor 1-3, No.4 233 Kezhu Road,  
Science City, Huangpu District, Guangzhou, China

## Class schedule & fees

8 weeks | July 1 - August 23, 2024

Week 1: July 1 to 5 | Week 2: July 8 to 12 | Week 3: July 15 to 19

Week 4: July 22 to 27 | Week 5: July 29 to August 2 | Week 6: August 5 to 9

Week 7: August 12 to 16 | Week 8: August 19 to 23

Programs	Frequency	Schedule	Fees *
<b>Immersive Mandarin</b> age 1.5 to 3 years unaccompanied	Monday to Friday	8:30am to 12:00pm	RMB2,625 / week (HKD3,000 / week)
	Monday to Friday	8:30am to 4:00pm	RMB3,500 / week (HKD4,000 / week)
<b>Immersive Mandarin</b> age 3 to 6 years unaccompanied	Monday to Friday	8:30am to 12:00pm	RMB2,625 / week (HKD3,000 / week)
	Monday to Friday	8:30am to 4:00pm	RMB3,500 / week (HKD4,000 / week)

- NOTE: Flight & accommodation not included

# Hangzhou, China

Guidepost Montessori  
Wansongling





guidepost  
immersive mandarin 2024



# Guidepost Montessori Wansongling

An unforgettable Hangzhou experience next to the iconic West Lake.

Guidepost Montessori Wansongling in Hangzhou, China, features high-fidelity Montessori programming and offers a unique learning experience to children ages eighteen months to six years.

Situated a few minutes southeast of the West Lake and surrounded by nature, Guidepost Montessori Wansongling offers half-day and full-day holiday programming.







# Immersive Mandarin Program Highlights

## Program Description

Young children will be immersed in a native Mandarin environment led by trained and qualified Montessori guides at. Children will have the unique opportunity to learn in an inspiring setting and explore the natural beauty that surrounds them.

Mornings are spent engaging with peers during the Montessori work period, laying the foundation for a lifelong love of learning. This is followed by daily afternoon activities that encourage an appreciation for the rich history and culture that our diverse world has to offer.



## Program Highlights



**Montessori at Heart**  
. high-fidelity programming  
. beautiful prepared environment



**Mandarin Immersion**  
. daily language activities



**Unique Learning Environment**  
. activities designed to explore the rich history and culture of Hangzhou



**Weekly Creative Creations**  
. fun hands on activities and creations



# Guidepost Montessori Wansongling



No.100-1A Wansongling Road,  
Shangcheng District, Hangzhou, China

## Class schedule & fees

8 weeks | July 1 - August 23, 2024

Week 1: July 1 to 5 | Week 2: July 8 to 12 | Week 3: July 15 to 19

Week 4: July 22 to 27 | Week 5: July 29 to August 2 | Week 6: August 5 to 9

Week 7: August 12 to 16 | Week 8: August 19 to 23

Programs	Frequency	Schedule	Fees *
<b>Immersive Mandarin</b> age 1.5 to 3 years unaccompanied	Monday to Friday	8:30am to 12:00pm	RMB2,625 / week (HKD3,000 / week)
	Monday to Friday	8:30am to 4:00pm	RMB3,500 / week (HKD4,000 / week)
<b>Immersive Mandarin</b> age 3 to 6 years unaccompanied	Monday to Friday	8:30am to 12:00pm	RMB2,625 / week (HKD3,000 / week)
	Monday to Friday	8:30am to 4:00pm	RMB3,500 / week (HKD4,000 / week)

- NOTE: Flight & accommodation not included

# Shanghai, China

Guidepost Montessori Wanhangdu

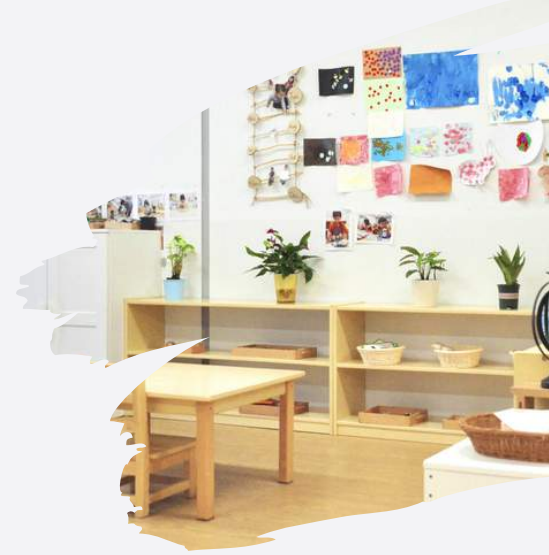
Guidepost Montessori Zixia Road

Guidepost Montessori Dongxiu Road





guidepost  
immersive mandarin 2024



# Guidepost Montessori Wanhangdu

The first Guidepost Montessori  
campus in Mainland China.

Guidepost Montessori Wanhangdu is located in Jing'an District of central Shanghai, only an eight-minute drive from Jing'an Temple.

The campus covers a total area of 548m<sup>2</sup> and features three classrooms, including one Nido classroom designed for infants aged six to eighteen months, one Toddler classroom designed for children aged eighteen months to two and a half years old, and one Young Children's House classroom for children aged from two and a half to four years old.





guidepost  
immersive mandarin 2024



## Guidepost Montessori Zixia Road

A beautiful learning environment in  
the heart of Shanghai.

Guidepost Montessori Zixia Road is located in the Huangpu District of central Shanghai, in one of the most popular areas of Shanghai, only a 5 minute walk to the Bund.

At Guidepost Montessori Zixia Road, we offer a Nido Program for infants aged 6 to 18 months, Toddler Program for children aged 18 months to 3 years are available, and one Young Children's House classroom for children aged two and a half to 4 years old.





guidepost  
immersive mandarin 2024



## Guidepost Montessori Dongxiu Road

A calming Montessori setting in the  
Pudong New District of Shanghai.

Guidepost Montessori Dongxiu Road is located in Pudong New District in Shanghai, just a 10-minute drive from the Bund and Century Park.

The campus covers a total area of 650m<sup>2</sup>, including an outdoor area of 180m<sup>2</sup>. There are three classrooms, including a classroom for Nido Program for infants aged 6 to 18 months, a Toddler classroom designed for children aged eighteen months to two and a half years old, and one Young Children's House classroom for children aged from two and a half to four years old.





# Immersive Mandarin Program Highlights

## Program Description

Young children will be immersed in a native Mandarin environment led by trained and qualified Montessori guides at. Children will have the unique opportunity to learn in an inspiring setting and explore the natural beauty that surrounds them.

Mornings are spent engaging with peers during the Montessori work period, laying the foundation for a lifelong love of learning. This is followed by daily afternoon activities that encourage an appreciation for the rich history and culture that our diverse world has to offer.



## Program Highlights

- ✓ **Montessori at Heart**
  - . high-fidelity programming
  - . beautiful prepared environment
- ✓ **Mandarin Immersion**
  - . daily language activities
- ✓ **Unique Learning Environment**
  - . activities designed to explore the rich history and culture of Shanghai
- ✓ **Weekly Creative Creations**
  - . fun hands on activities and creations



**guidepost**  
immersive mandarin 2024



# Guidepost Montessori Wanhangdu



Room 101, No. 15 Jing Hang Apartment, Lane 858,  
Wanhangdu Road, Jing'an District, Shanghai

## Class schedule & fees

8 weeks | July 1 - August 23, 2024

Week 1: July 1 to 5 | Week 2: July 8 to 12 | Week 3: July 15 to 19

Week 4: July 22 to 27 | Week 5: July 29 to August 2 | Week 6: August 5 to 9

Week 7: August 12 to 16 | Week 8: August 19 to 23

Programs	Frequency	Schedule	Fees *
<b>Immersive Mandarin</b> age 2.5 to under 4 years unaccompanied	Monday to Friday	8:30am to 12:00pm	RMB2,625 / week (HKD3,000 / week)
	Monday to Friday	8:30am to 4:00pm	RMB3,500 / week (HKD4,000 / week)

- NOTE: Flight & accommodation not included





**guidepost**  
immersive mandarin 2024



# Guidepost Montessori Zixia Road



Floor 1, No.115-117, Zixia Road, Huangpu District,  
Shanghai

## Class schedule & fees

8 weeks | July 1 - August 23, 2024

Week 1: July 1 to 5 | Week 2: July 8 to 12 | Week 3: July 15 to 19

Week 4: July 22 to 27 | Week 5: July 29 to August 2 | Week 6: August 5 to 9

Week 7: August 12 to 16 | Week 8: August 19 to 23

Programs	Frequency	Schedule	Fees *
<b>Immersive Mandarin</b> age 2.5 to under 4 years unaccompanied	Monday to Friday	8:30am to 12:00pm	RMB2,625 / week (HKD3,000 / week)
	Monday to Friday	8:30am to 4:00pm	RMB3,500 / week (HKD4,000 / week)

- NOTE: Flight & accommodation not included



**guidepost**  
immersive mandarin 2024



# Guidepost Dongxiu Road



Room 101, Building 8, Lane 999, Dongxiu Road,  
Pudong New District, Shanghai

## Class schedule & fees

8 weeks | July 1 - August 23, 2024

Week 1: July 1 to 5 | Week 2: July 8 to 12 | Week 3: July 15 to 19

Week 4: July 22 to 27 | Week 5: July 29 to August 2 | Week 6: August 5 to 9

Week 7: August 12 to 16 | Week 8: August 19 to 23

Programs	Frequency	Schedule	Fees *
<b>Immersive Mandarin</b> age 2.5 to under 4 years unaccompanied	Monday to Friday	8:30am to 12:00pm	RMB2,625 / week (HKD3,000 / week)
	Monday to Friday	8:30am to 4:00pm	RMB3,500 / week (HKD4,000 / week)

- NOTE: Flight & accommodation not included



# Enrollment Information

## Commitment & Fees

- All programs require a one-week commitment, except 'Around The World' 6-12 months and 12-24 months which requires a minimum two-week commitment.
- Fees are based on the number of weeks enrolled.
- Enrollment is only secured once the application form and relevant payment is paid.

## Discounts

Promotion	Discount*	Details
<b>Early Bird</b>	10%	Enroll before April 5 and receive a 10% discount.
<b>Current Guidepost Community</b>	5%	All Guidepost families currently enrolled in a Guidepost program will receive a 5% discount.
<b>Multi-Week</b>	5%	Sign up for 3 or more weeks, and receive a 5% discount. Different weeks can be in different locations; please contact us for more details.

\* Multiple discounts can be applied up to 15%.

## Admissions

- Should you have any questions following the review of the booklet, please don't hesitate to email or call/WhatsApp us!
- Email: [admissions@guidepost.hk](mailto:admissions@guidepost.hk)
- Call/WhatsApp: + 852 9126 6211

## Apply Here





## Terms & Conditions

Below is a look at our general terms & conditions. However, for overseas enrollments, additional terms & conditions may apply and will be shared during the application process.

- [Admissions](#): Enrollment spots are limited. Enrollment selections will be made based on the sequence of applications received, as well as priority for existing enrolled families. After submitting this form and included payment, you'll receive an email confirming your child's enrollment in this program.
- [Class Schedule and Age Groups](#): Guidepost reserves the right to change and/or amend the class schedule and age groups as deemed necessary.
- [Inclement Weather Policy](#): Weather policies vary by region. Please refer to the final terms & conditions outlined on the application form for the region you are applying to.
- [No Tuition Refunds](#): Guidepost has a strict no refund policy. Tuition and/or classes cannot be postponed in time or transferred towards another student.
- [No Make-up Classes](#): Given the limited time during the holiday periods, we are not able to offer make-up classes in any circumstance.
- [Accompanied Classes](#): Only one parent is permitted inside the classroom. Absolutely no swapping can take place throughout the class. Accompanied classes are only offered to Hong Kong based families and require a minimum two week commitment.
- [Travel Insurance](#): Families who opt for a program in a different region may be asked to display proof of valid travel insurance prior to their child's first class.
- [Non-Discrimination Policy](#): Guidepost does not discriminate on the basis of race, sex, national origin, disability, religion, or any other protected status. We make our best effort to accommodate the needs of every child who wishes to attend Guidepost. In the event that your child does have a disability or suspected disability, we will do a fully individualized assessment of your child in order to determine whether Guidepost possesses the necessary expertise and resources to provide for the best interests of your child, or, alternatively, whether the child may pose a health or safety threat to him/herself or others in our environment, or require a fundamental alteration of our program.



[guidepost.hk](http://guidepost.hk)

[admissions@guidepost.hk](mailto:admissions@guidepost.hk)

+ 852 9126 6211

[@guideposthongkong](https://www.instagram.com/guideposthongkong)